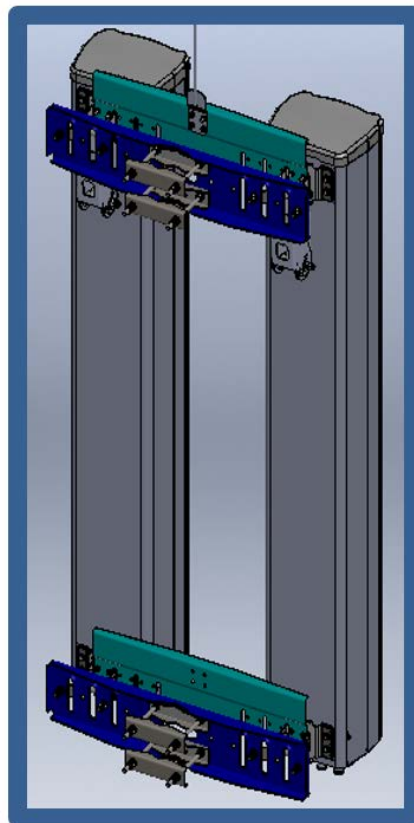


Mobile operators are now moving from 2T2R and 2T4R to 4T4R radios, embracing higher order MIMO, including precoder based beamforming for LTE services at Low-Band spectrum such as 700 and 850MHz bands to enhance capacity and Quality of Service (QoS). When operating 4T4R radios with closely spaced correlated antenna arrays, there are preferred separation distances for optimizing coverage and/or capacity.

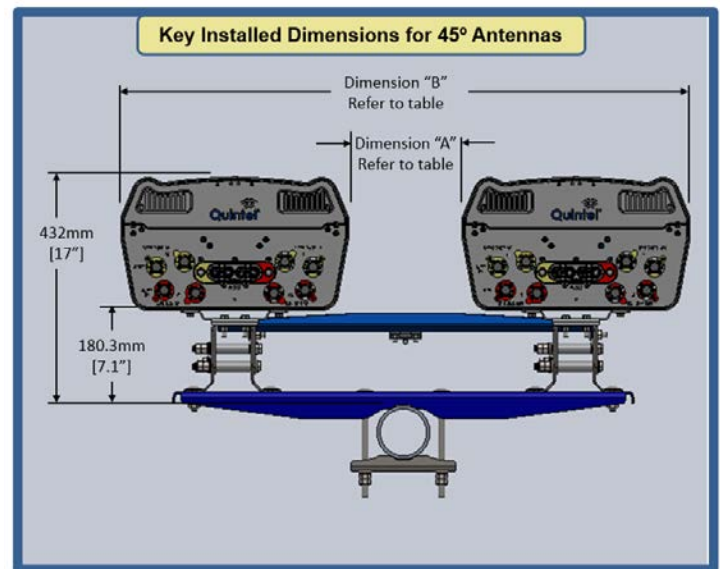
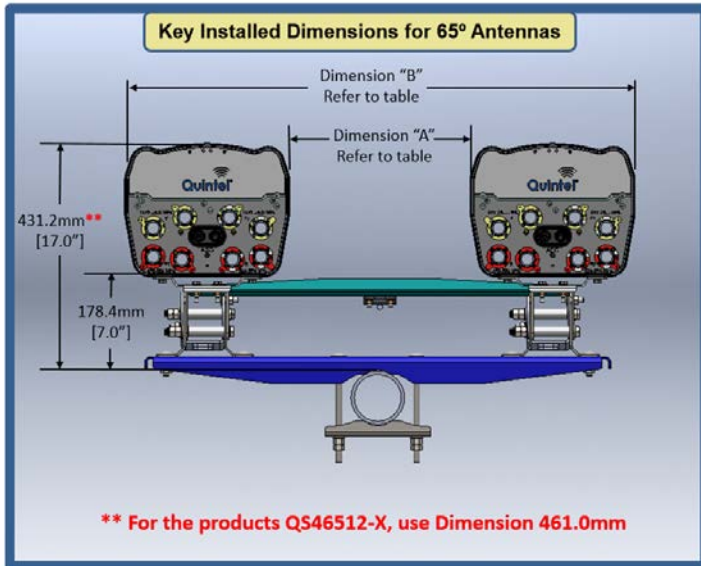
The **Quintel Optimal Separation (QOS)** Antenna Bracket allows a selection of one of five optimized horizontal separations for a single band or across multiple bands, to be selected across two Quintel MultiServ™ antennas when operating with 4T4R Radios, and using one mounting position or pole. The choice of separation distance, number of spectrum bands, and resulting network performance attributes are Patent Pending.

The QOS Antenna Bracket is compatible with all of Quintel's 45° and 65° Antenna models, for 6 Port, 8 Port, 10 Port and 12 port MultiServ™ Antenna portfolio. For more information on optimizing array distances when operating 4T4R radios for LTE services at Low-Band using the QOS Antenna Bracket, please contact Quintel

Mechanical Characteristics	AS-005246
Allowable Mast Diameter	3.75 - 4.75 inches / 95 - 120mm
Material (incl. Fasteners)	Hot Dipped Galvanized Steel
Weight of Bracket	64 lbs (29.0kg)
Mechanical Tilt	0-10° Down Tilt or 0-2° Up Tilt
Wind Load Survival	150mph



Products	Center to Center	Dim A - Inside to Inside Edge	Dim B - Outside to Outside Edge	Lambda Spacing					Suggested Use
				Band 12	Band 13	Band 14	Band 17	Band 5	
45°	654mm / 26"	224mm / 9"	1084mm / 43"	1.62	1.66	1.69	1.64	1.95	700MHz - Max Capacity
	580mm / 23"	151mm / 6"	1010.5mm / 40"	1.43	1.47	1.49	1.45	1.72	850MHz or 700/850MHz Dual Band - Max Capacity
	507mm / 20"	77mm / 3"	937mm / 37"	1.24	1.25	1.3	1.26	1.5	NOT USED
65°	654mm / 26"	349mm / 14"	959mm / 38"	1.62	1.66	1.69	1.64	1.95	700MHz - Max Capacity
	580mm / 23"	278mm / 11"	885.5mm / 35"	1.43	1.47	1.49	1.45	1.72	850MHz or 700/850MHz Dual Band - Max Capacity
	507mm / 20"	202mm / 8"	812mm / 32"	1.24	1.25	1.3	1.26	1.5	NOT USED
	434mm / 17"	128mm / 5"	738.5mm / 29"	1.06	1.09	1.1	1.07	1.27	NOT USED
	360mm / 14"	55mm / 2"	665mm / 26"	0.87	0.89	0.91	0.88	1.05	Max Coverage - Refer to Site Design Authority



About Quintel

Quintel is a leading innovator in the design, development, and delivery of network-efficient antenna solutions for wireless operators worldwide. The company's products enable global wireless operators to independently deploy and optimize multiple air interfaces or services on a single standard antenna platform. Quintel is the only antenna maker whose products can increase a wireless network's capacity and provide additional services, without increasing the number or size of antennas. Quintel is headquartered in Rochester, New York with additional offices throughout North America and Europe. More information about Quintel is available at www.quintelsolutions.com.

This document provides a general description of the product and shall not form part of any contract.

© 2018 Quintel Technology Limited. All rights reserved. Quintel and the Quintel logo are registered trademarks Quintel Technology Limited. All other trademarks are the property of their respective owners.