

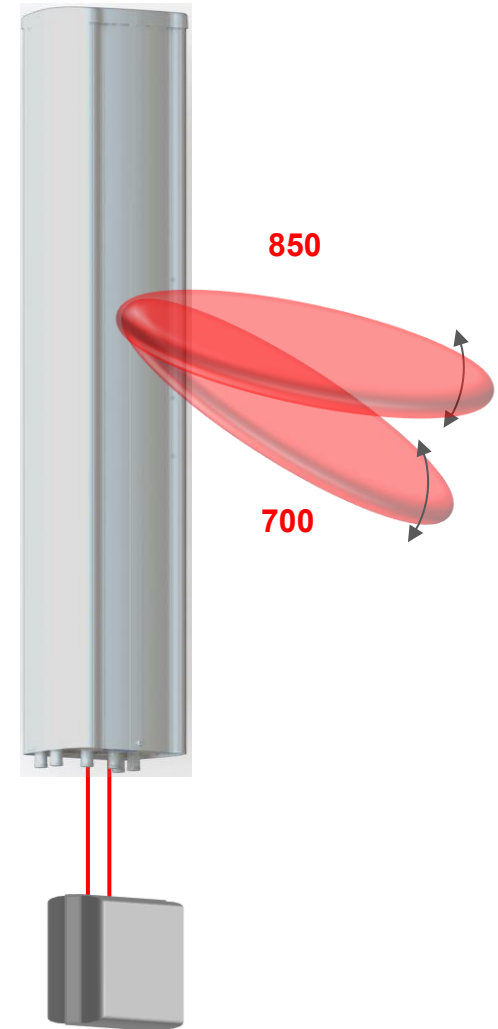


- Independent Tilts at 700 & 850MHz with Dual-Band Radios
- Optimized Azimuth patterns for Min Inter-Sector Interference
- Industry leading Minimal Wind-Load Radome design

- AISG & 3GPP compliant internal (RET) with Smart Bias T
- Best in class Quality and Internal PIM performance
- Slimline 12" Form factor

Electrical Characteristics	4x Ports 1 2		8x Ports 3 4 5 6			
	698-806 & 824-894		1695-2400			
Operating Frequency (MHz)	698-806	824-894	1695-1780	1850-1990	2110-2180	2300-2400
Peak Gain (dBi)	13.8	13.6	17.1	17.7	18.0	18.2
Azimuth beamwidth ¹	67°	63°	73°	66°	61°	60°
Elevation beamwidth ¹	11.9°	10.4°	6.4°	5.8°	5.3°	4.7°
Gain ¹ (dBi)	13.4	13.2	16.6	17.1	17.4	17.7
Polarization	2x ±45°		2x ±45°			
Electrical down-tilt range	2°-14°	2°-14°	0°-8°			
USLS 20°>mainbeam (dB) ¹	17	17	16	18	17	16
FTB at 180°±10° (dB) ¹	30	28	28	33	35	36
Port to Port isolation ¹	25	25	30	30	30	30
Return loss/VSWR (dB)	14/1.5	14/1.5	14/1.5	14/1.5	14/1.5	14/1.5
X Polar at 0° (dB)	16	16	19	19	19	18
Max Power handling (port)	250 Watts		250 Watts			
Max Power (all ports)	700 Watts					
PIM (dBc: 2x43dBm)	>153		>153			

¹ Typical Performance across ports, frequencies and Downtilt.



700/850MHz
Dual-Band Radio

Mechanical Characteristics

Dimensions	L 72"(1828mm) x W 12"(304mm) x D 9.6"(245mm)
Weight (excl mounting brackets)	92.5lbs (42.0kg)
No. of Connectors	6x 4.3-10.0 DIN Female Long Neck
Max Wind Speed	150mph (67m/s)
Equivalent Projected Area ²	Front: 2.6ft ² (0.24m ²) Side: 5ft ² (0.48m ²)
Wind Load ² @ 161km/h (45m/s)	Front: 64lbs (285N), Side: 120lbs (535N)
Operating Temperature	-40°C to +65°C.

² Equivalent Projected Area and Wind Load derived from wind tunnel measurements.

Tel: +1 (585) 420-8720
info@quintelsolutions.com
www.quintelsolutions.com

THIS DOCUMENT PROVIDES A GENERAL DESCRIPTION OF THE PRODUCT AND SHALL NOT FORM PART OF ANY CONTRACT.
© 2020 Quintel USA, Inc. All rights reserved. Quintel and the Quintel logo are registered trademarks Quintel Cayman Limited.



- Independent Tilts at 700 & 850MHz with Dual-Band Radios
- Optimized Azimuth patterns for Min Inter-Sector Interference
- Industry leading Minimal Wind-Load Radome design

- AISG & 3GPP compliant internal (RET) with Smart Bias T
- Best in class Quality and Internal PIM performance
- Slimline 12" Form factor

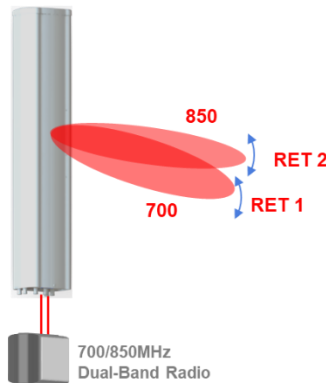
Fully Integrated RET Characteristics

Protocol	V 1.1/2.0/3GPP
Surge immunity	IEC 61000-4-5:2005 4KV(AISG PIN)
AISG Data rate	9.6 kbps
RET Connectors	2x 8-Pin DIN Female & 2x 8-Pin DIN Male

Port Layout, Array Configuration and RET ID



RET ID	Ports			Arrays		Freq Range	
1	1	2		R1		698-806MHz	
2	1	2		R2		824-894MHz	
3	3	4	5	6	Y1	Y2	1695-2400MHz



Tel: +1 (585) 420-8720
info@quintelsolutions.com
www.quintelsolutions.com

THIS DOCUMENT PROVIDES A GENERAL DESCRIPTION OF THE PRODUCT AND SHALL NOT FORM PART OF ANY CONTRACT.
 © 2020 Quintel USA, Inc. All rights reserved. Quintel and the Quintel logo are registered trademarks Quintel Cayman Limited.